

DELTA STATE UNIVERSAL BASIC EDUCATION BOARD (DELTA SUBEB)

About Delta SUBEB

The Delta State Universal Basic Education Board (Delta SUBEB) is a statutory institution established by the Delta State Government pursuant to the provisions of the Universal Basic Education (UBE) Act, 2004. The Board operates under the policy guidance, coordination, and regulatory oversight of the Universal Basic Education Commission (UBEC).

Delta SUBEB is the principal agency responsible for the implementation, coordination, monitoring, and evaluation of the Universal Basic Education programme in Delta State. The Board exists to ensure the provision of free, compulsory, and universal basic education for all children of school-going age, while promoting quality, equity, accountability, and sustainability in basic education delivery.

In alignment with national education objectives and global best practices, Delta SUBEB is committed to improving access to education, strengthening teacher quality, enhancing learning outcomes, and providing safe, inclusive, and child-friendly learning environments across public primary and junior secondary schools in Delta State.

Vision Statement

The Delta State Universal Basic Education Board (Delta SUBEB) envisions a future where every child in Delta State has access to quality, free, and compulsory basic education that nurtures their full potential. We aim to create an inclusive, equitable, and responsive education system that meets the developmental needs of each child, preparing them to contribute meaningfully to society. Delta SUBEB will lead the transformation of education through a commitment to high educational standards, accessibility, and sustainability in line with global best practices and the national education policy.

Key Elements:

Inclusive Education: Ensuring that all children, regardless of their background or abilities, are included in the educational system.

Equitable Education: Guaranteeing that every child has equal access to quality education, irrespective of socio-economic status or geographical location.

Responsive to Developmental Needs: Providing education that adapts to the changing needs of society, empowering children with skills that align with future demands.

Free and Compulsory Education: Upholding the policy of free and compulsory education for all school-going children.

Focus on Quality: Commitment to the delivery of high-quality education, ensuring a high standard of teaching and learning environments.

Mission Statement

Delta SUBEB is committed to the effective implementation of the Universal Basic Education (UBE) programme in Delta State by coordinating and managing educational activities in partnership with stakeholders. Our mission is to facilitate the provision of high-quality education through efficient policy execution, resource management, and continuous quality assurance practices. By promoting professional development, strengthening community involvement, and ensuring proper monitoring and evaluation, we will contribute to an educational system that supports holistic child development and prepares children for lifelong learning.

Key Elements:

Policy Coordination and Execution: Ensuring seamless execution of educational policies at both the state and local levels, in accordance with the UBEC guidelines.

Prudent Resource Management: Managing financial and human resources efficiently to ensure the optimal delivery of educational services.

Quality Assurance: Maintaining high standards in teaching, learning, and school management through continuous evaluation, inspection, and professional development programs.

Professional Development of Teachers: Fostering the growth of educators through targeted training programs to enhance teaching quality.

Stakeholder Collaboration: Engaging with various stakeholders, including government agencies, local communities, and development partners, to strengthen the education system.

Monitoring and Evaluation: Regularly assessing the effectiveness of educational initiatives to ensure that objectives are met and children's educational needs are fulfilled.

Mandate of the Board

In accordance with the UBE Act (2004) and UBEC operational guidelines, Delta SUBEB is mandated to:

- Implement the Universal Basic Education programme in Delta State
- Ensure free and compulsory basic education at primary and junior secondary levels
- Manage and supervise public basic education institutions in collaboration with Local Government Education Authorities (LGEAs)
- Recruit, deploy, train, promote, and discipline teachers and non-teaching staff
- Develop, rehabilitate, and maintain basic education infrastructure
- Monitor and evaluate teaching and learning processes
- Manage UBE intervention funds and State counterpart contributions
- Promote inclusive education for children with special needs and disadvantaged groups
- Strengthen community participation through School-Based Management Committees (SBMCs)

Organizational Structure (Organogram)

Delta SUBEB operates a structured governance and management system designed to ensure effective leadership, accountability, and efficient service delivery. The organizational structure integrates Board Members, Secretary to the Board, and Departmental operations in line with UBEC standards as shown below:

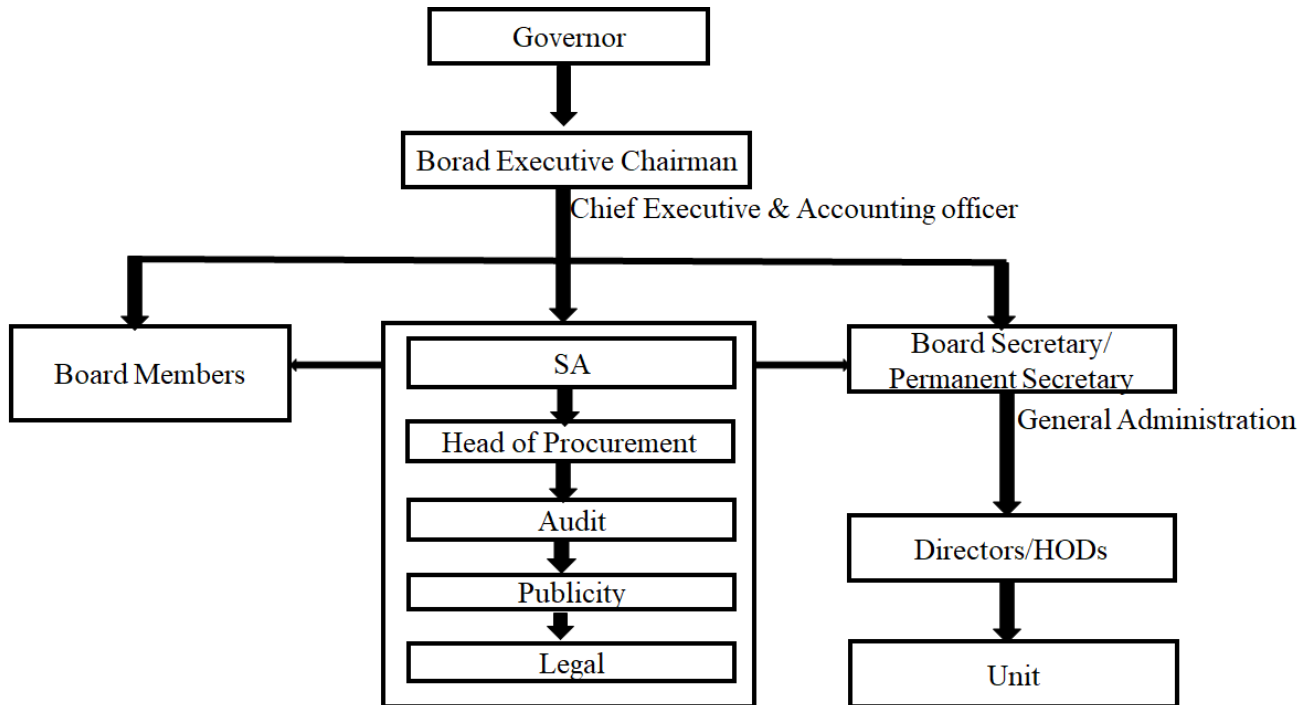


Figure 1: Delta SUBEB Organogram

1. Membership of the Board

The membership of the Board shall be as follows:

- A full-time Chairman to be appointed by the Governor who shall be the Chief Executive and Accounting officer of the Board and must be an experienced and seasoned educationist;
- Three full-time members appointed by the Governor;
- One ex-officio member to represent the Ministry of Education in the State, not below the rank of Director;
- Three ex-officio members to represent the Local Governments from the three Senatorial Districts;
- One representative each from:
 - Federal Ministry of Education;
 - The Parents/Teachers Association (PTA) in the State;
 - The State wing of the Nigerian Union of Teachers (NUT);
 - Ministry of Finance not below the rank of Director;

- Non-Academic Staff Union/Non-Teaching Staff Union;
- The Conference of Primary School Head Teachers of Nigeria (COPSHON);
- All Nigeria Conference of Principals of Secondary School (ANCOPS);
- Association of Private School Owners

Note: The Board Executive Chairman is the Chief Executive and Accounting Officer of the Board responsible for strategic leadership, policy implementation, and coordination of UBE programmes in the State

2. Board Secretary/Permanent Secretary

There shall be a Secretary to the Board who shall be an experienced, seasoned and serving educationist and shall be appointed by the Governor. The Secretary to the Board shall:

- be the Chief Administrative Officer;
- keep record of the proceedings of the Board and any Committee appointed by the Board; and
- perform such other duties as the Board or any committee appointed by the Board may from time to time assign as appropriate.

3. Directorates/Departments

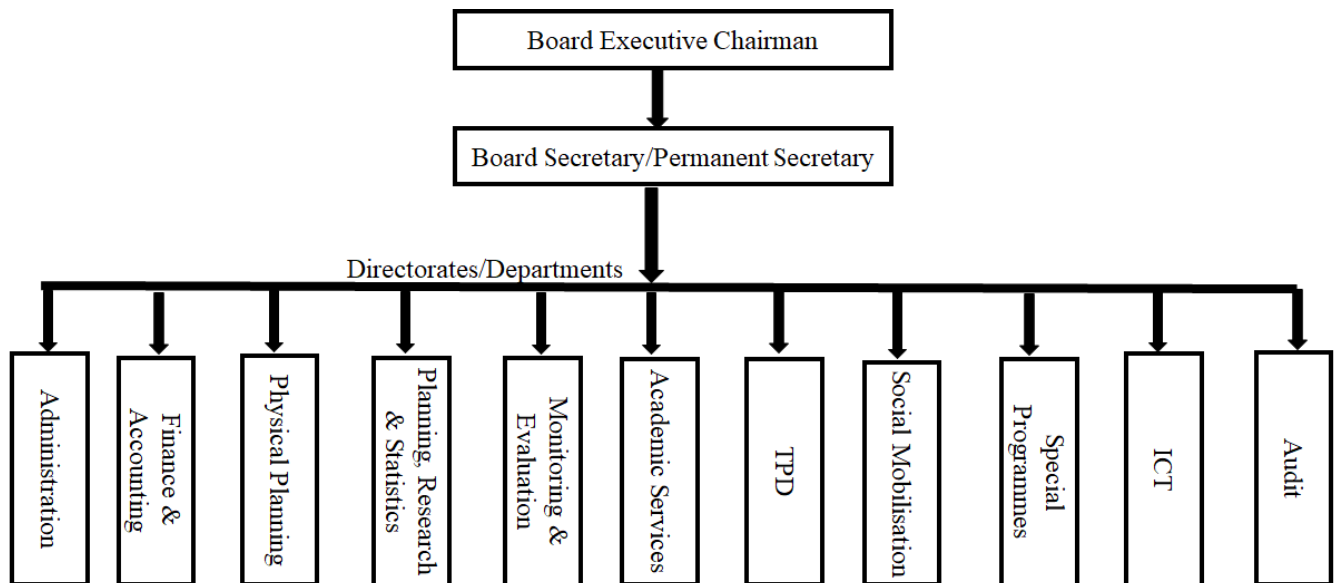


Figure 2: D-SUBEB Directorate/Department Organogram

Under the supervision of the Executive Chairman and Board Secretary/Permanent Secretary, the following core Directorates/Departments carry out specialized functions in their various units as shown in the table below:

Table 1: D-SUBEB Directorate/Department Unite and Functions

| S/N | Directorate/Department | Units | Functions |
|-----|---|---|---|
| 1 | Administration | 1. Pension, 2. Promotion, 3. Store, 4. Registry, 5. Drivers, 6. Security. | Managing personnel records, pension verification, promotions, store management, registry operations, security. |
| 2 | Finance & Accounting | 1. Cash, 2. Main/Final Account, 3. Salaries, 4. Cash Voucher Control (CVC), 5. Pension Verification. | Handling cash flow, final account preparation, salary processing, CVC management, pension verification. |
| 3 | Physical Planning | 1. Works, 2. Utility | Planning and managing works related to infrastructure, utilities, and construction projects. |
| 4 | Planning, Research & Statistics | | Planning and research, gathering and analyzing statistical data, and formulating policies. |
| 5 | Monitoring & Evaluation | 1. Quality Assurance, 2. Programme Monitoring, 3. E&L Assessment | Ensuring quality, monitoring educational programs, and evaluating teaching and learning (E&L) outcomes. |
| 6 | Academic Services | 1. Basic Education School Sport, 2. Instructional Materials, 3. Green School Climate Change Initiatives, 4. Curriculum. | Managing school sports, instructional material distribution, green initiatives, and curriculum development. |
| 7 | Teachers Professional Development (TPD) | 1. TPD, 2. Instructional Technology & Innovation, 3. Federal Teacher Scheme | Teacher training, instructional tech innovation, and federal teacher support programs. |
| 8 | Social Mobilisation | 1. SBMC, 2. Nomadic Education, 3. Girl/Boy Child Education, 4. Library Matters, 5. Pupils Enrolment Drive. | Social mobilization, supporting nomadic education, gender-focused education, library services, and pupil enrolment. |
| 9 | Special Programmes | 1. EECD | Early Childhood Education and Development programs. |

| | | | |
|----|-------|--|--|
| 10 | ICT | 1. EMIS, 2. Data/Analytics, 3. Maintenance | Managing educational management information systems (EMIS), data analysis, and system maintenance. |
| 11 | Audit | 1. Store Main Account, 2. Headquarter Salary 3. Cash/Bank, 4. Asset Inventory. | Auditing financial records, salary disbursements, cash management, and asset inventory. |

Each department is headed by a Director and operates in accordance with approved government regulations and UBEC operational standards.

Core Values

Delta SUBEB is guided by the following institutional values:

- Equity and Inclusion
- Quality and Excellence
- Transparency and Accountability
- Professionalism and Integrity
- Collaboration and Partnership

Commitment to Quality Assurance

Delta SUBEB places strong emphasis on maintaining and improving the quality of basic education through:

- Regular school monitoring and evaluation
- Continuous professional development for teachers
- Adherence to national curriculum standards
- Data-driven planning and decision-making
- Strengthening inspection and quality assurance mechanisms

Stakeholder Engagement

The Board works collaboratively with:

- Universal Basic Education Commission (UBEC)
- Federal Ministry of Education
- Delta State Ministry of Basic and Secondary Education
- Local Government Education Authorities (LGEAs)
- School-Based Management Committees (SBMCs)

- Development partners, civil society organizations, and host communities

Transparency and Accountability

D-SUBEB is committed to transparency, due process, and accountability in the management of public funds, in compliance with applicable financial regulations, UBEC guidelines, and international standards of public sector governance.

Tenure of Office

The Chairman, Secretary and other full-time members of the Board shall hold office for a period of four years and shall be eligible for re-appointment for a further period of four years.

Appointment of Staff of the Board

- The Board shall appoint persons to be officers and servants of the Board to carry out its functions and duties.
- The remuneration and tenure of the officers and servants of the Board shall be fixed by the Board in line with the conditions and terms of service.

Removal of Staff from Office

The Chairman or any member shall be removed from office by the Governor for inability to discharge the functions of his office (whether arising from infirmity of mind or body), misconduct or any other cause.

Contact Information (Placeholder)

Head Office
Delta State Universal Basic Education Board
Asaba, Delta State, Nigeria

Website: -----

Email: -----

Phone No: -----